



MONTHLY MEMBERSHIP PROGRESS REPORT

District 325A2

Results as of: 06/30/2018

GMT: KHAGENDRA SITLAULA

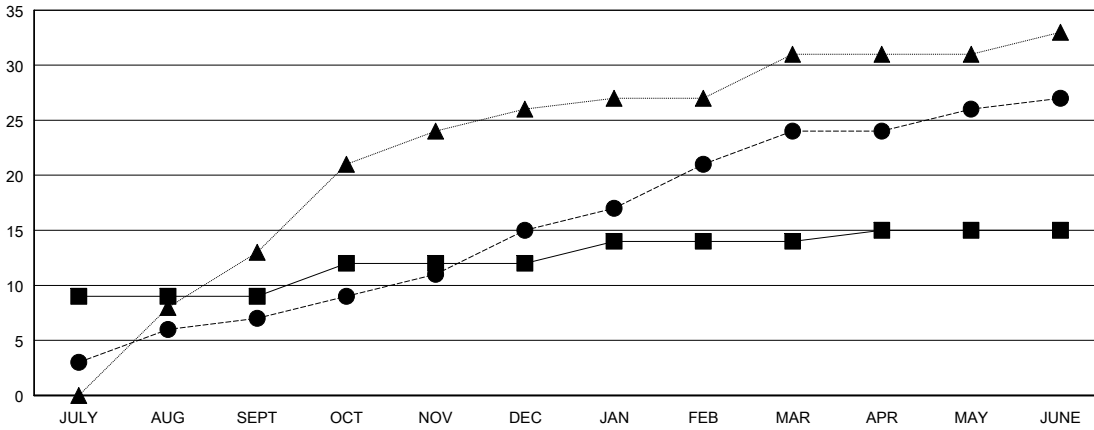
LOCATION NEPAL

GMT CA

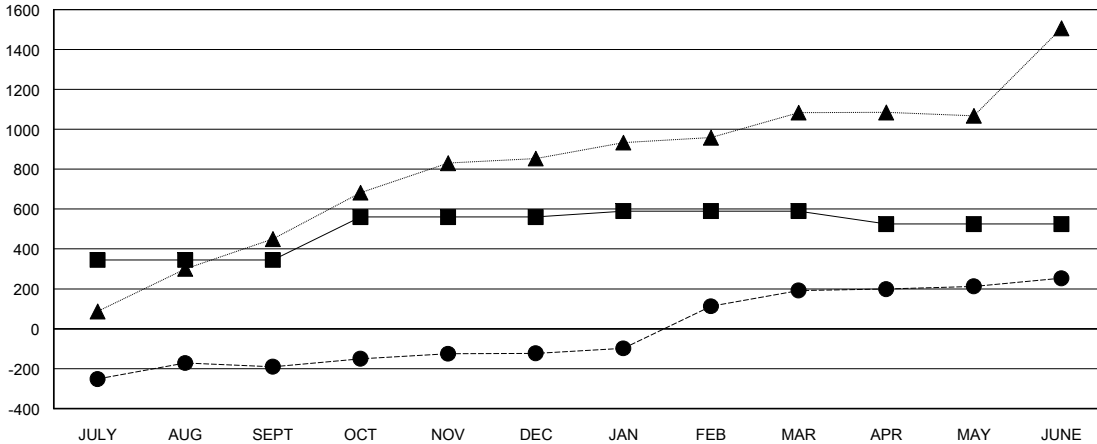
| Clubs | | | |
|-----------------------|---------------|-----------|---------------|
| RESULTS FOR 2017-2018 | | | |
| QUARTER | NEW CLUB GOAL | NEW CLUBS | DROPPED CLUBS |
| JULY/AUG/SEPT | 9 | 7 | 0 |
| OCT/NOV/DEC | 3 | 8 | 1 |
| JAN/FEB/MAR | 2 | 9 | 0 |
| APR/MAY/JUNE | 1 | 3 | 3 |

| Members | | | |
|-----------------------|------------------------|----------------------|--|
| RESULTS FOR 2017-2018 | | | |
| QUARTER | MEMBER GROWTH NET GOAL | MEMBER GROWTH ACTUAL | DROPPED MEMBERS ACTUAL (including transfers) |
| JULY/AUG/SEPT | 345 | 306 | 466 |
| OCT/NOV/DEC | 215 | 360 | 265 |
| JAN/FEB/MAR | 30 | 445 | 115 |
| APR/MAY/JUNE | -65 | 704 | 631 |

GOALS AND ACTUAL NEW CLUBS CUMULATIVE



GOALS AND ACTUAL MEMBERS CUMULATIVE



| |
|------------------|
| DROPPED CLUBS: 4 |
|------------------|

130 CLUBS OF 182 ADDED 1 OR MORE NEW MEMBERS

| GENDER DISTRIBUTION | |
|--|----------------|
| MALE | 3,690 (72.03%) |
| FEMALE | 1,433 (27.97%) |
| Women Percentage Fiscal Year Goal: 25% | |

| DROPPED MEMBERS | |
|-----------------|--------------|
| DECEASED | 2 |
| CLUB CANCELLED | 86 |
| OTHER | 1,389 |
| TOTAL | 1,477 |

[CLICK HERE FOR CUMULATIVE MEMBERSHIP DATA](#)

| | |
|---------------------------------|---|
| TOTAL FAMILY UNIT MEMBERS | 0 |
| FAMILY MEMBERS PAYING HALF DUES | 0 |